

DASHBOARD

LYNCHBURG MUSEUM SYSTEM • MARCH 2020

SOCIAL MEDIA



4,280

Facebook
Page Likes



807

Twitter
Followers



1,021

Instagram
Followers

VISITORS (Through March 17)

530

352

Lynchburg
Museum

162

Point of
Honor

10

Off-Site
Outreach

School
Students 6

WEBSITES (Unique Visitors)

LynchburgMuseum.org 2,795

PointofHonor.org 572

LynchburgPhotos.org 539

Visitation dropped off dramatically after the spread of Coronavirus Disease 2019 (COVID-19) in the United States and the subsequent advisories from public health officials during the week of March 9. The museums officially closed to the public on March 18.

Visitors came from **23** states, Brazil, Germany, and Malaysia before March 18.

TOUR/PROGRAM GROUPS:

- The Heights School, Potomac, Maryland

UPCOMING EVENTS & EXHIBITS

All Lynchburg Museum System in-person events, exhibits, and programs have been postponed. Until the museums reopen, please find us online for our new digital initiatives: blogs, live videos, featured artifacts, and more!

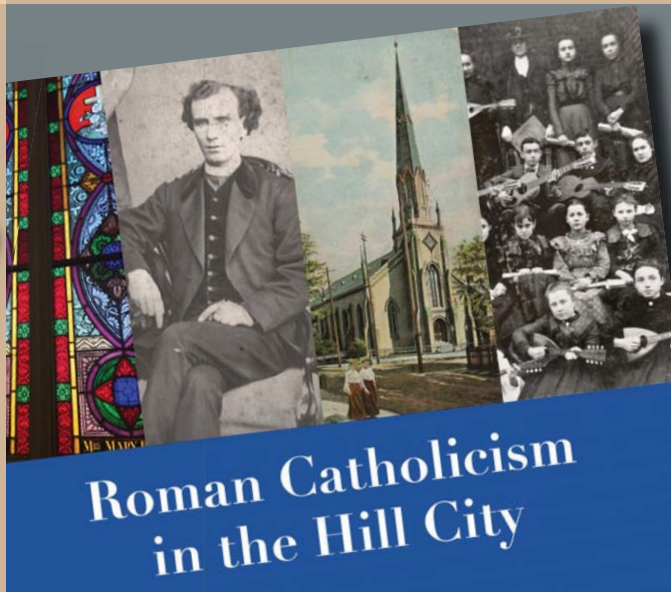


Visit LynchburgMuseum.org or PointofHonor.org for Complete Details

RECENT DONATION



The Etude magazine was founded in Lynchburg in 1883 by Theodore Presser. Lawrence Nelson was a professor of English literature at Sweet Briar College. Gift of Kelly J. Fisk, 2020.9



Roman Catholicism in the Hill City

NEW DIGITAL EXHIBIT

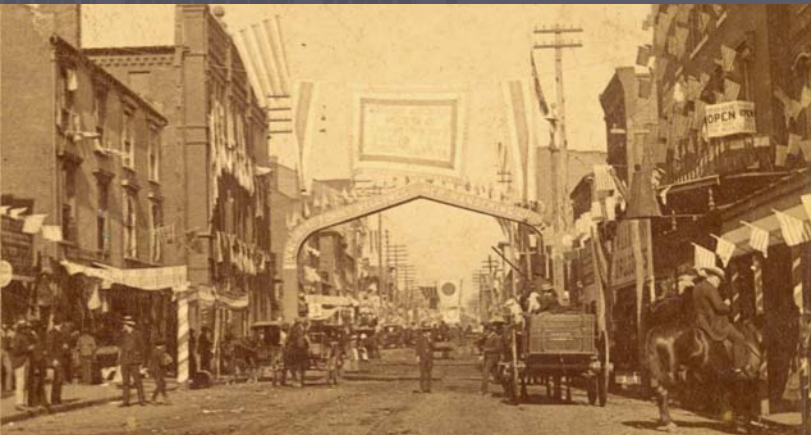
Visit Our Website
LynchburgMuseum.org

COMING SOON
*Agents of Change:
Female Activism in
Virginia from Women's
Suffrage to Today*

*Courtesy of the Virginia Museum
of History & Culture*

DIGITAL OUTREACH

LYNCHBURG MUSEUM SYSTEM ■ SPRING 2020



Digital Resources for Local History
and Genealogy Research
MUSEUM WEBPAGE

Spill the Tea with Lynchburg's
Oldest Inhabitant
YOUTUBE SERIES



ASK A CURATOR!

WITH EMILY KUBOTA
Curator of the Lynchburg Museum System

LIVE ON THURSDAY

APRIL 9, 2020

11:00AM

Facebook & Instagram

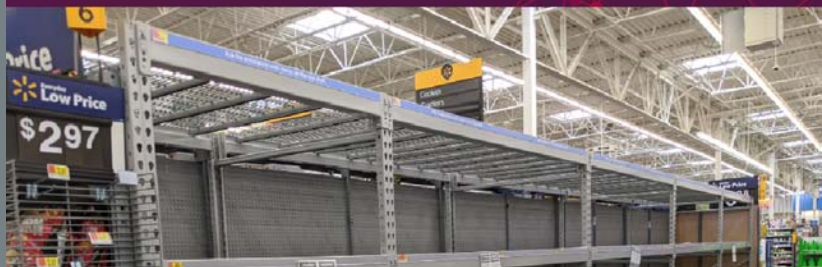
Ask a Curator!

LIVE ON FACEBOOK AND INSTAGRAM

Curating COVID-19

A Crowdsourced
Lynchburg Museum Exhibit

Curating COVID-19
CROWDSOURCED EXHIBIT ONLINE





*T*he grounds of Point of Honor remain open while the house and gift shop are closed. Please visit any day of the week, dawn to dusk. Make sure you visit the new North Lawn, between the house and B Street.

*D*uring a recent site check of the Old Court House attic, museum staff took this photo of Court Street looking north from the cupola. The bell tower in the foreground belongs to the old First Presbyterian Church (1899) next door.

